

# Hautū Waka



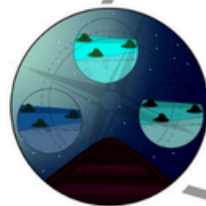
## Whakarite

Who's on the waka?  
What's their role?



## Te Rapunga

The unknown  
Tuning in.



## Te Whāinga

Diving deeper.  
Testing your tohu out.  
What's working?



## Te Whiwhinga

What gains are you noticing?  
Staying on track.  
Hoea te waka!



## Te Rawenga

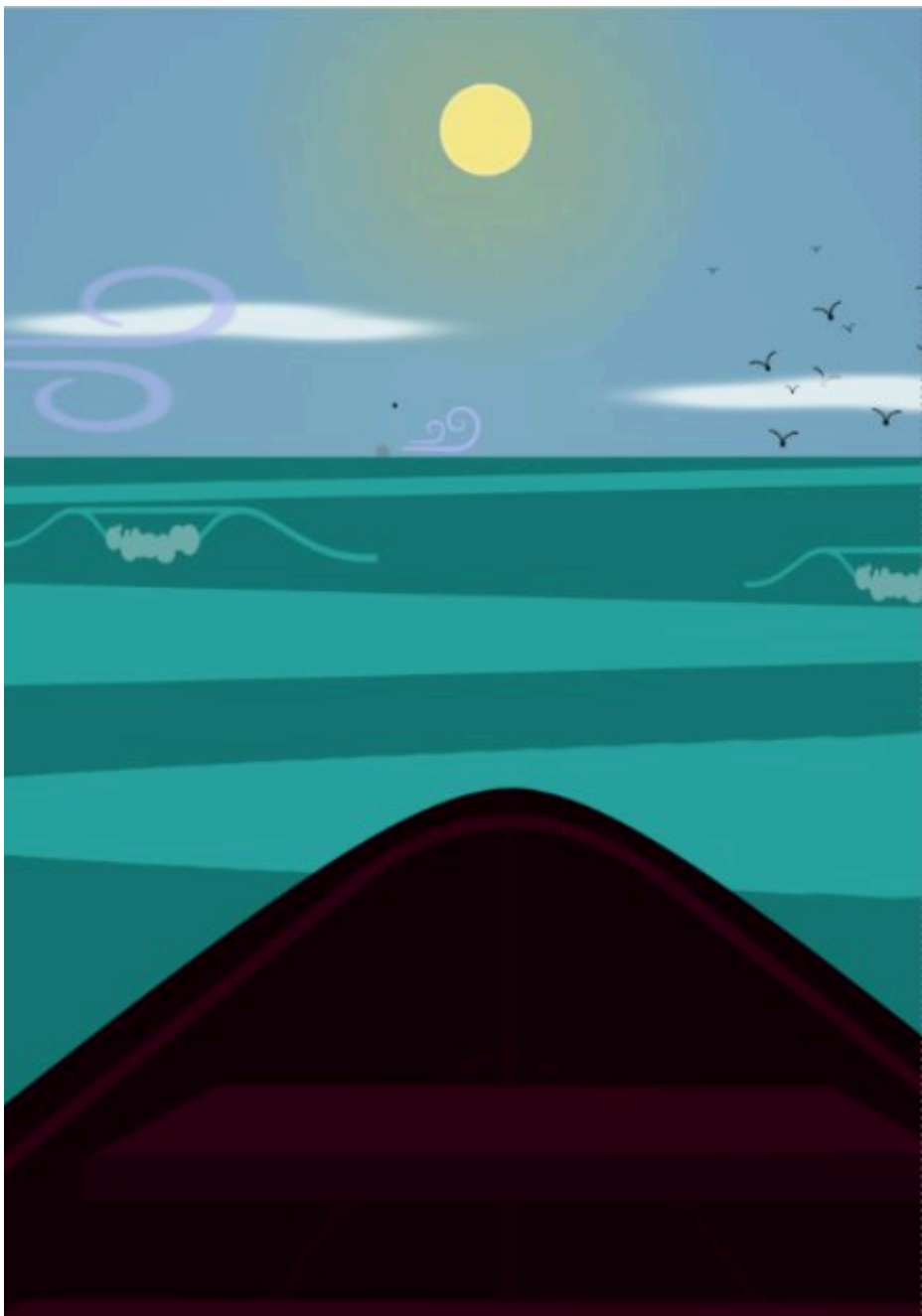
Reo Māori destination.  
What would you be proud of?  
Whakanuia / celebrate!



## Te Kitenga

Sighting tohu that signal  
potential direction.

# Hautū Waka



*Six phases represent the stages of navigation tūpuna made while traversing Te Moana Nuia a Kiwa. We can draw on their expertise in innovation and exploring as we embark on an early oral language journey. Talking Matters facilitators use this navigation framework to guide the journey towards a Language Rich Environment.*

**Whakarite - preparing for the journey**

**Te Rapunga - searching**

**Te Kitenga - sighting tohu**

**Te Whāinga - deeper exploration of tohu**

**Te Whiwhinga - making gains**

**Te Rawenga - destination**

## ***The whakapapa of this framework***

*This Hautū Waka framework was shared with Talking Matters by Tohunga Rereata Makiha (Ngāti Whakaheke, Te Aupōuri, Te Arawa).*

*It was further developed by the Talking Matters Team with Roimata Taniwha-Paoo at TSI.*

*It is based on whakapapa and the navigation traditions of tangata whenua.*